



**VIBES Corp.™** Est. 1967

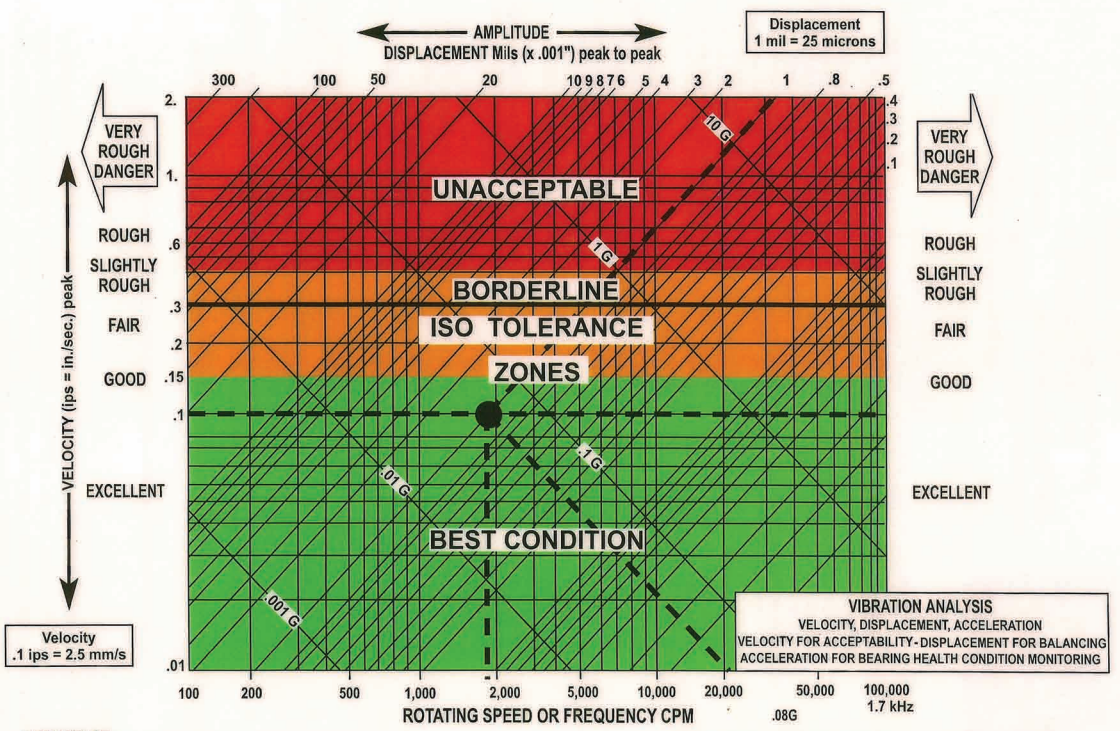
**Vibration Industrial Balancing & Equipment Services, Corporation**

720 - 999 W. Broadway, Vancouver, BC V5Z 1K5

**www.vibescorp.ca** email: **info@vibescorp.ca**

Phone: 604-681-9444 Cell: 604-619-9381 Fax: 604-738-4080

### VIBRATION SEVERITY GRAPH FOR GENERAL ROTATING MACHINERY



Velocity  
.1 ips = 2.5 mm/s

**VIBRATION ANALYSIS**  
VELOCITY, DISPLACEMENT, ACCELERATION  
VELOCITY FOR ACCEPTABILITY- DISPLACEMENT FOR BALANCING  
ACCELERATION FOR BEARING HEALTH CONDITION MONITORING

REFERENCE POINT ● = 1800 rpm machine/motor excellent condition

ACCELERATION or FORCE OF GRAVITY "G" (ips<sup>2</sup> = in/sec<sup>2</sup> for simplicity)  
ACTUAL G = 32 fps/s = 9.8 m/s/s

© 2012 VIBES Corp

**"Accurate Analysis, Diagnostic Evaluations, Corrections on All Types of Machinery"**

Vibrations, Noise, Dynamic Balance, Performance, Laser Shaft & Drive Alignment, Electro-Mechanical Repairs  
ACCU-GUARD PdM Program™ Monitoring Contracts, DUE DILIGENCE Verification Studies.

Agents / Specialists: Industrial & Commercial Fans, Rotors, Blowers, Cooling Towers, Motors, Magnetic (ASD) Drives.  
24/7 SERVICES • SALES • TRAINING COURSES